

- 1
- 2
- 3
- 4
- 5
- 6
- 7
- 8
- 9
- 10
- 11
- 12
- 13
- 14
- 15
- 16
- 17
- 18

MAIN SPECIFICATIONS

Stainless Steel **NI**
AISI 304 (A2)

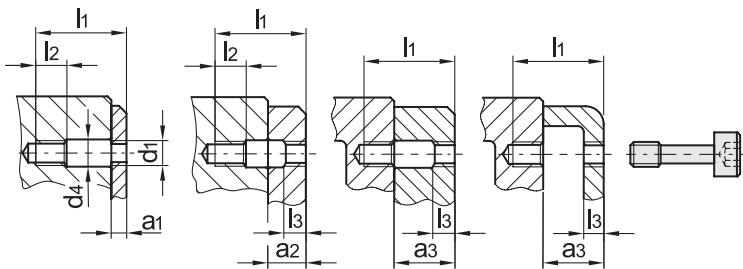
FEATURES AND APPLICATIONS

Stainless Steel-Captive socket cap screws GN 912.2 can be used to prevent loss of the thumb screw, due to the d₃ recessed portion of the stud. Thus the „captivity of the fixing element“ according to the Mechanical Engineering Directive 2006 / 42 / EG is given.

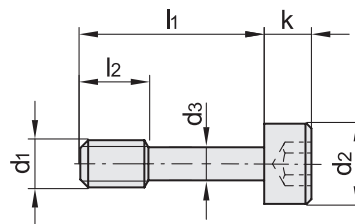
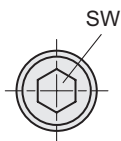
When using, instead of a typical tapped and bore hole, it is necessary to provide tapped bores with a thread d₁ on each of the two elements to be assembled. Additionally, a clearance bore of d₄ on one or both sides must be cut. Depending on the design and required clamping length at ... a₃ of the component being attached, there are a number of assembly options as shown above.



Assembly options



Conversion Table	
1 mm = 0,039 inch	
l1	
mm	inch
12	0.47
16	0.63
20	0.79
25	0.98
30	1.18
35	1.38
40	1.57



Code	Description	d1	d2	d3-0.3	d4	a1	a2	a3	k	l1	l2	l3	sw	⚖
GN.13571	GN 912.2-M3-12-NI	M3	5.5	2.2	3.5	1.5 + 3	3 + 6.5	6.5 + 8	3	12	4	1.5	2.5	1
GN.13572	GN 912.2-M3-16-NI	M3	5.5	2.2	3.5	3 + 7	7 + 8	8 + 12	3	16	4	1.5	2.5	2
GN.13573	GN 912.2-M4-16-NI	M4	7	3	4.5	2 + 5	5 + 8	8 + 11	4	16	5	2	3	3
GN.13574	GN 912.2-M4-20-NI	M4	7	3	4.5	5 + 9	9 + 11	11 + 15	4	20	5	2	3	4
GN.13575	GN 912.2-M5-20-NI	M5	8.5	3.9	5.5	2.5 + 6	6 + 10.5	10.5 + 14	5	20	6	2.5	4	5
GN.13576	GN 912.2-M5-25-NI	M5	8.5	3.9	5.5	6 + 11	11 + 14	14 + 19	5	25	6	2.5	4	6
GN.13577	GN 912.2-M6-25-NI	M6	10	4.5	6.5	3 + 7	7 + 13	13 + 17	6	25	8	3	5	7
GN.13578	GN 912.2-M6-30-NI	M6	10	4.5	6.5	7 + 12	12 + 17	17 + 22	6	30	8	3	5	8
GN.13579	GN 912.2-M8-30-NI	M8	13	6.3	8.5	4 + 8	8 + 16	16 + 20	8	30	10	4	6	17
GN.13580	GN 912.2-M8-35-NI	M8	13	6.3	8.5	8 + 13	13 + 20	20 + 25	8	35	10	4	6	19
GN.13581	GN 912.2-M8-40-NI	M8	13	6.3	8.5	13 + 18	18 + 25	25 + 30	8	40	10	4	6	21

Standard machine parts